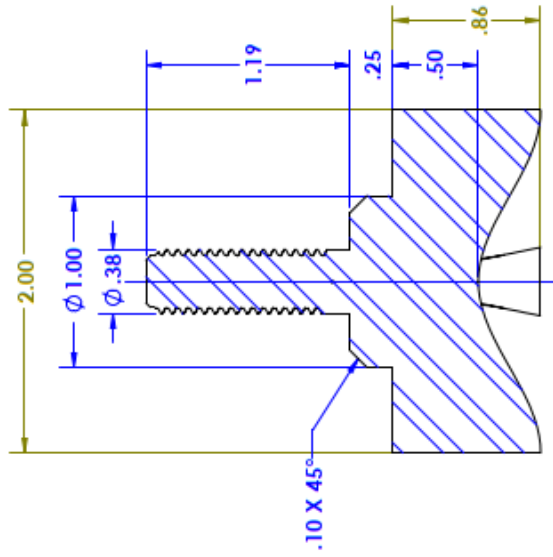
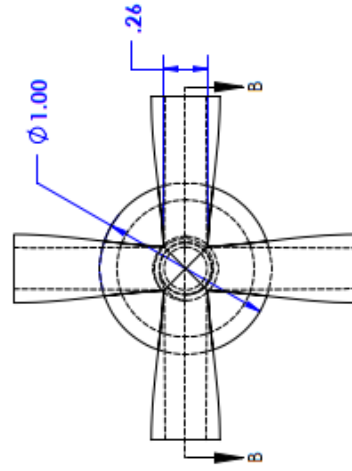


NOTES:

- ANSI Sntandrds, IPS units
- Using the "Sheet metal" function:
(Thickness 0.20in., Bend Radius 0.25 in,
K-Factor 0.5, Auto Relief-Obround 0.5)
- AISI 304 material is used



SECTION B-B



NOTES:
- ANSI Standard, IPS units
- AISI 304 material

N.B. To obtain this part it is recommended to use the "Loft" feature

